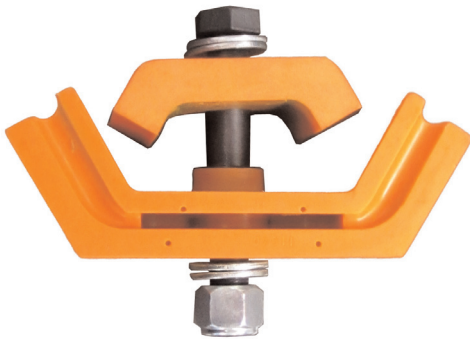
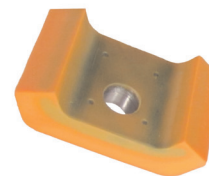


STEMCO GAFF Product Tip # 02

11760 & 11540 Rear Motor Mount Kit



- ▶ Design improves the isolator performance and durability.
- ▶ Integral Steel Sleeve Bonded to **STEMCO GAFF** Polyurethane
- ▶ Heavy Gauge Steel Plates integrally Bonded, that evenly distributes and directs the load and forces it to the isolator
- ▶ Easy Installation Guides



11760

INCLUDES

QTY 2	11540
QTY 2	11541
QTY 2	Bolts 3/4" x 5" G8
QTY 2	Lock Nuts 3/4"
QTY 4	Flat Washer 3/4"

Motor Mount Kit
Rear

11541

ID	13/16"
THK	1 1/4"
WD	2 3/4"
LG	4 1/4"
HD	70A

Motor Mount
Rear (Upper)

11540

ID	13/16"
THK	2 5/8"
WD	3 1/8"
LG	7 7/8"
HD	70A

Motor Mount
Rear (Lower)

STEMCO GAFF special formulated polyurethane performs better to isolate vibration while maintaining correct alignment.

STEMCO GAFF mount's metal structure distributes forces and weight applied to the mount, which results in higher performance and overall durability.

STEMCO GAFF products provide superior mechanical properties, outstanding chemical resistance and improved design features.



The first step in using STEMCO Kaiser products is SAFETY FIRST SAFETY ALWAYS. Please take a moment to make sure these safety precautions are in place. Some components are heavy! For your protection wear safety shoes, safety glasses, safety gloves, use proper lifting techniques and secure the unit before work begins.