

November 18, 2015  
**Tech Tip #48**

**Tech Tip is to alert STEMCO customers that there is an interference issue between the STEMCO 4195 (P-spindle) hubcaps and the Hendrickson Precision320 axle nut.**



Typical STEMCO Aeris 4195 Cap

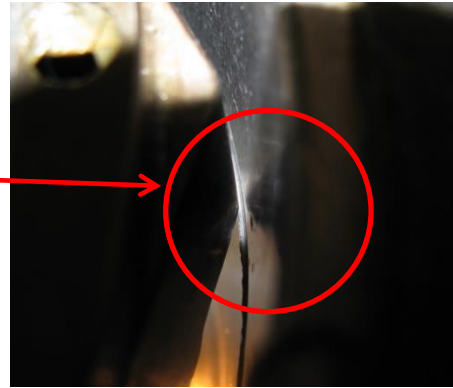
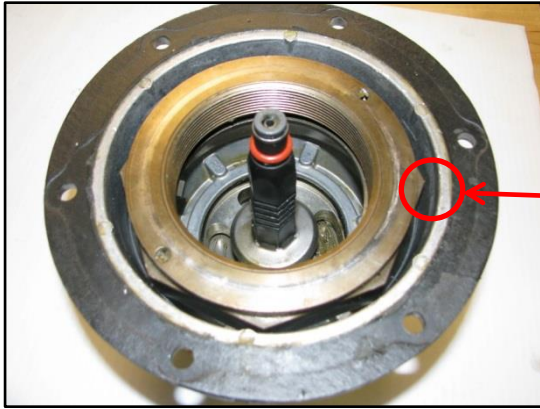


Typical STEMCO Standard 4195 Cap

List of STEMCO part numbers that are affected by this interference:

Part Number	Description
All part numbers ending in 4195	STEMCO TP Hubcaps
Part numbers 831-0121 thru 831-0124	STEMCO Aeris Hub Caps, Single Tire
Part numbers 831-0221 thru 831-0224	STEMCO Aeris Hub Caps, Dual Tire
All Part numbers ending in 4372 or 4376	PSI Ready Hub Caps
All Part numbers ending in 4311	TireMaax EC & CP Ready Hub Caps
All kits with "2" for the fourth digit. XXX-2XX	STEMCO Aeris Tire Inflation Kits

**\*Note there is no issue for the TN application**



Hendrickson axle nut and 4195 Cap



Interference occurs between the axle nut and hubcap, cutting into the hubcap wall

### Reference Information:

Hendrickson Technical Procedure: Precision320 Spindle Nut System: Hubcap Compatibility

Hendrickson document: T77001, October 2012

**Quote from the T77001 document:** *“While some early production nuts were machined from steel, the current nut design utilizes powdered metal construction and is slightly thicker than the steel nut it replaces. Using the larger powdered metal nut in applications for which it was not intended can result in interference with the hubcap”*

**To prevent this interference issue with the 4195 hubcap, Stemco recommends that the Precision320 Spindle nut be replaced with the STEMCO Pro-Torq Nut part number 447-4723.**